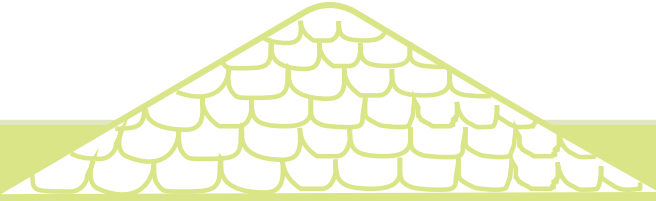


**Activité : Le memory des grandeurs**



“ Retrouve les lapins de même grandeur ? ”



J'ai beaucoup aimé faire cette activité !



J'ai aimé faire cette activité !



J'ai moyennement aimé faire cette activité !



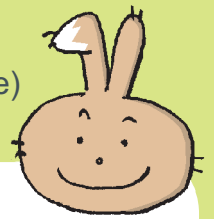
Je n'ai pas aimé faire cette activité !



Coche le lapin correspondant



► **Fiches parents.** Le memory des grandeurs : Règles du jeu (1ère maternelle)



“ Le memory des grandeurs :  
règles du jeu “

- **Contenu:**

36 cartes

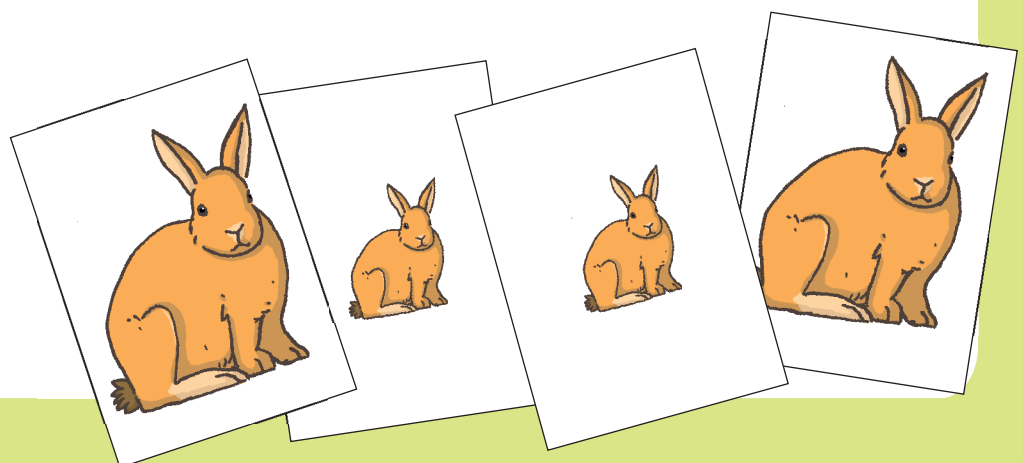
1 lexique

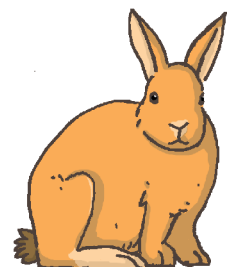
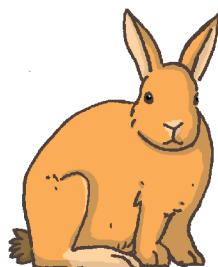
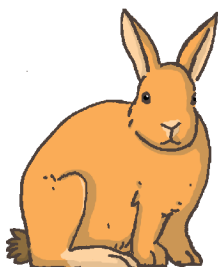
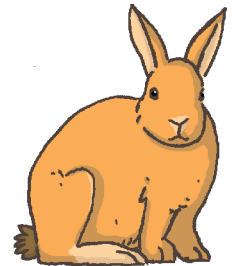
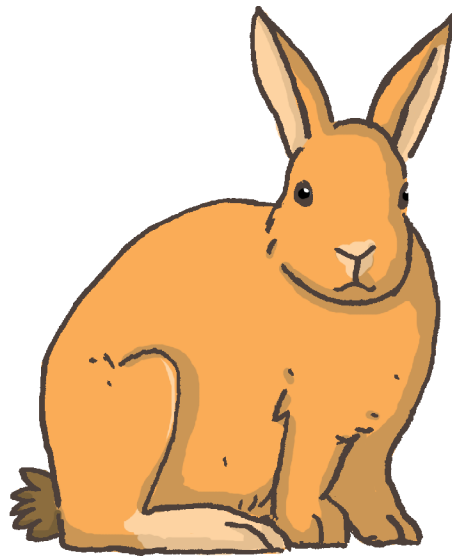
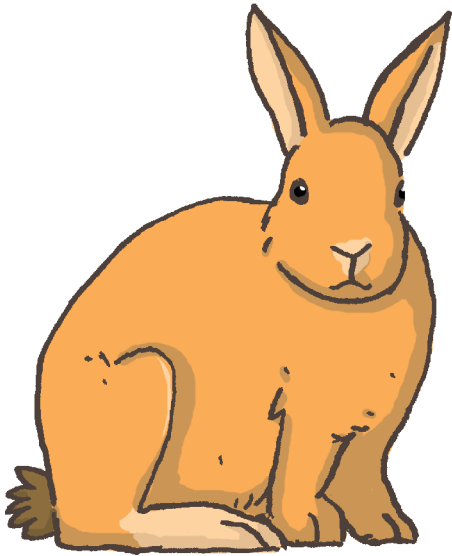
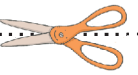
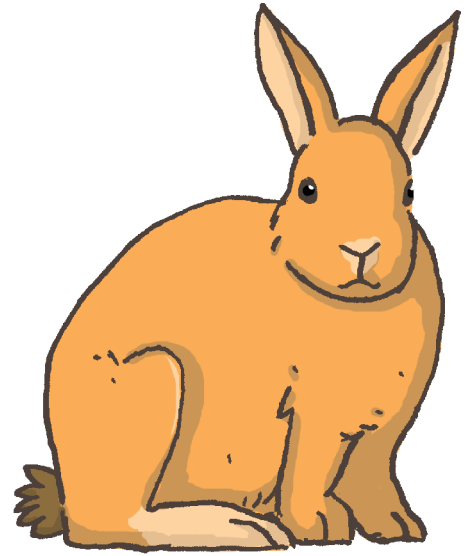
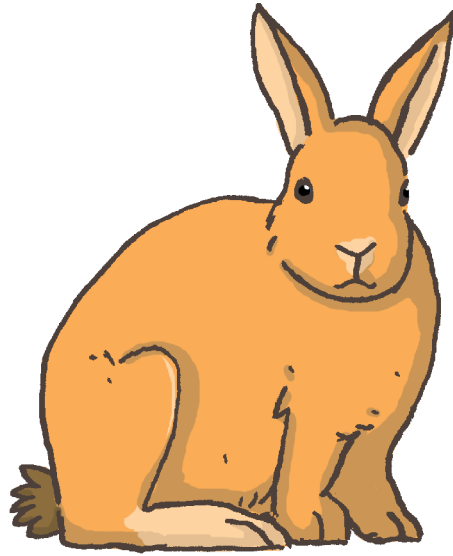
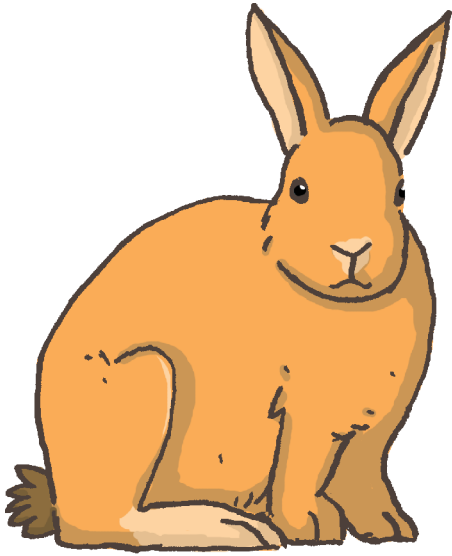
- **Règles du jeu:**

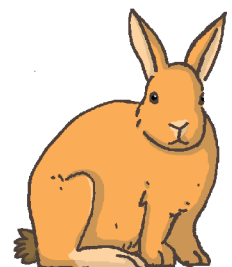
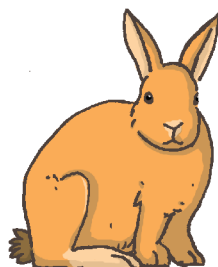
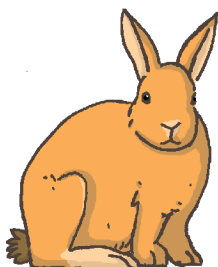
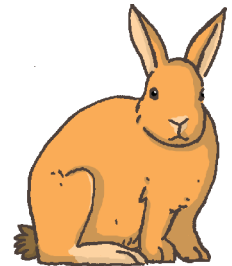
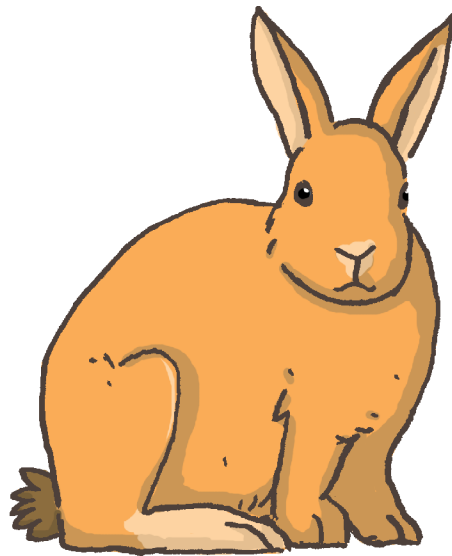
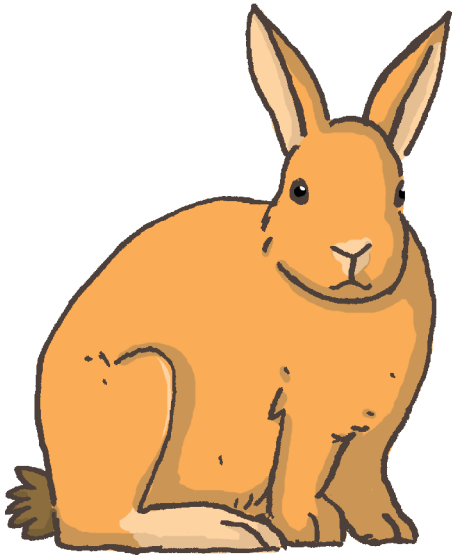
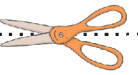
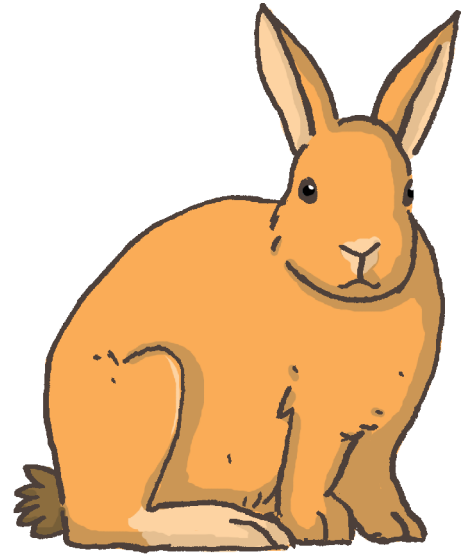
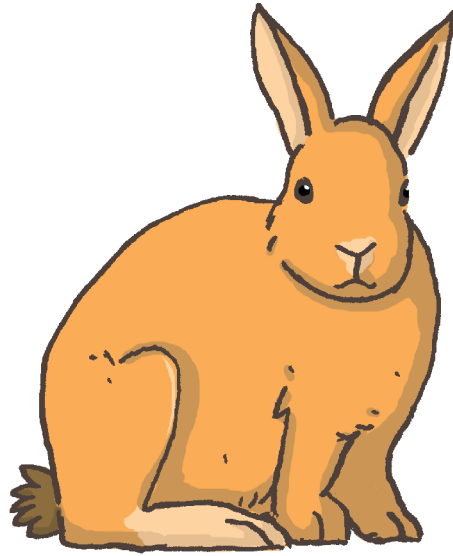
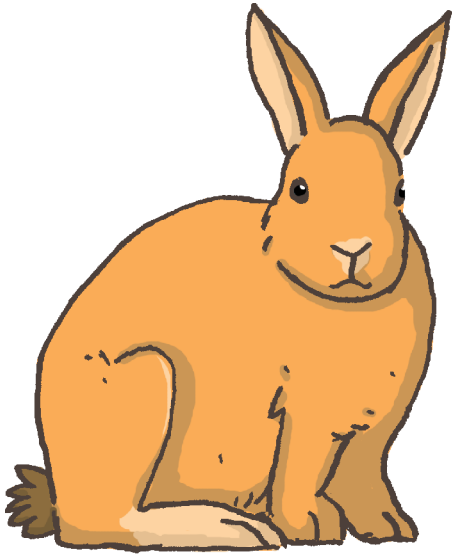
- 2, 3 ou 4 joueurs.
- Retourner toutes les cartes sur la table (face vierge).
- Jouer chacun à son tour.
- Chaque joueur retourne deux cartes.
- Si les cartes sont identiques, le joueur exprime la ressemblance en montrant les cartes « Les deux lapins ont la même grandeur » et il prend les cartes devant lui.
- Si les cartes sont différentes, le joueur exprime la différence en montrant les cartes correspondantes « Il y a un grand lapin et un petit lapin » et il retourne les cartes sur la table sans les prendre.
- La partie est terminée lorsque toutes les cartes ont été prises par les joueurs.
- Pour déterminer le gagnant, les joueurs comparent la hauteur de leur tas. Le tas le plus épais a gagné.

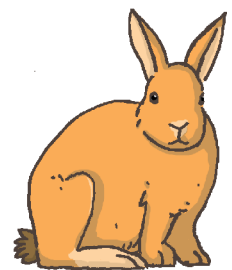
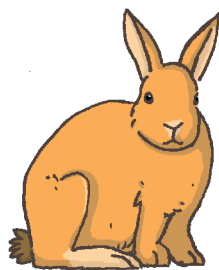
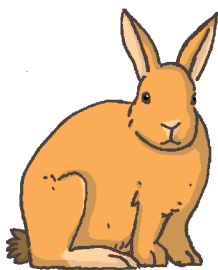
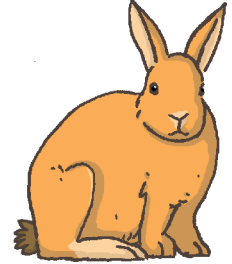
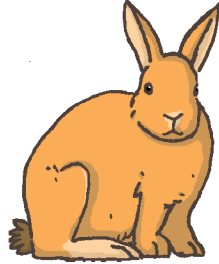
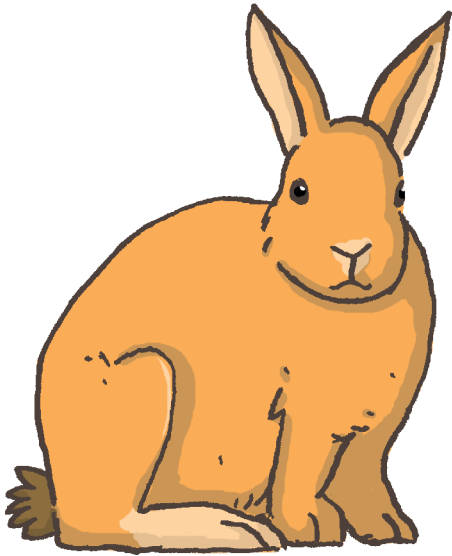
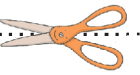
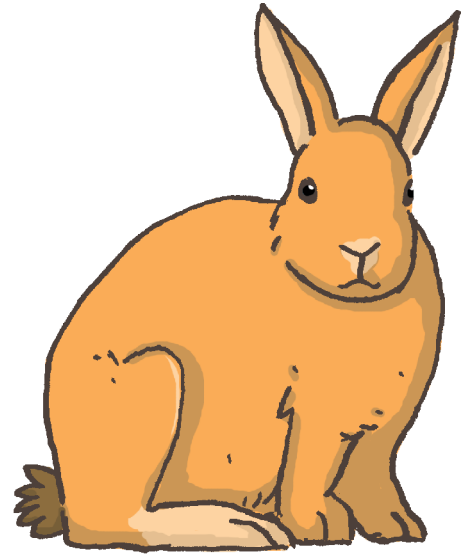
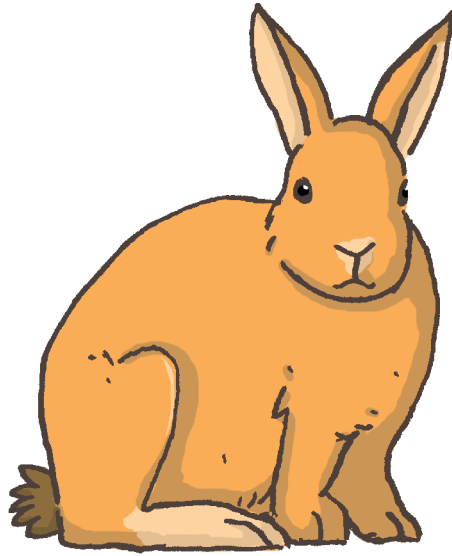
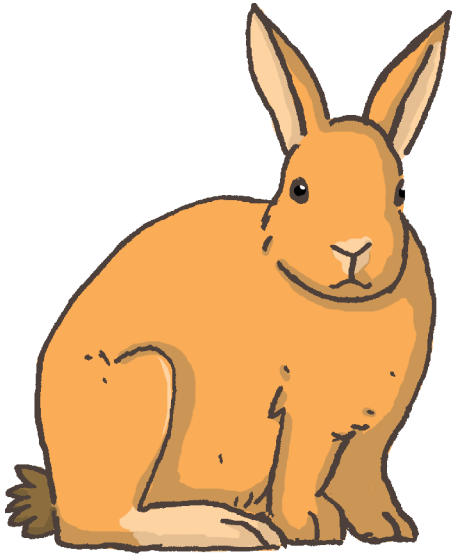
- **Lexique:**

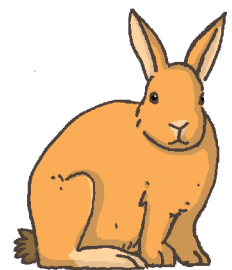
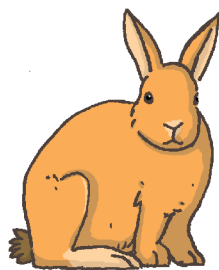
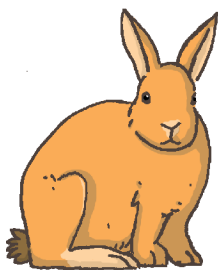
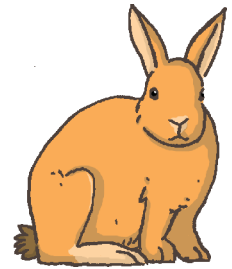
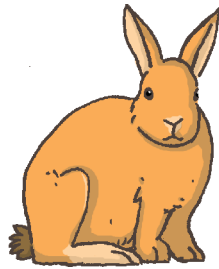
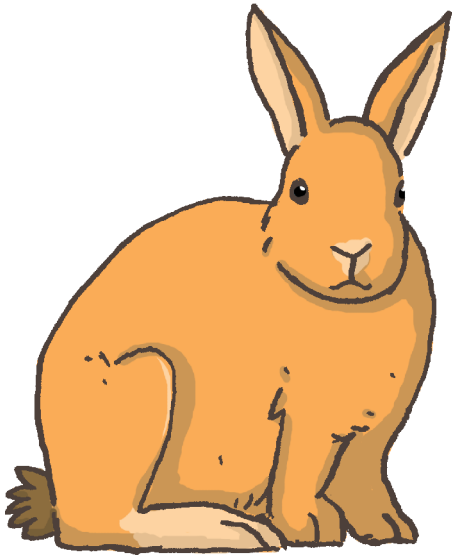
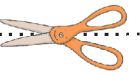
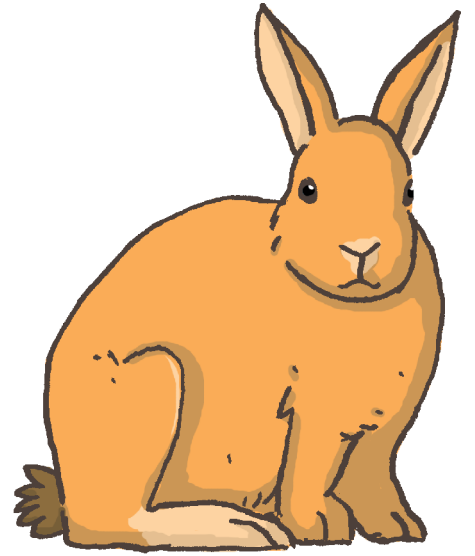
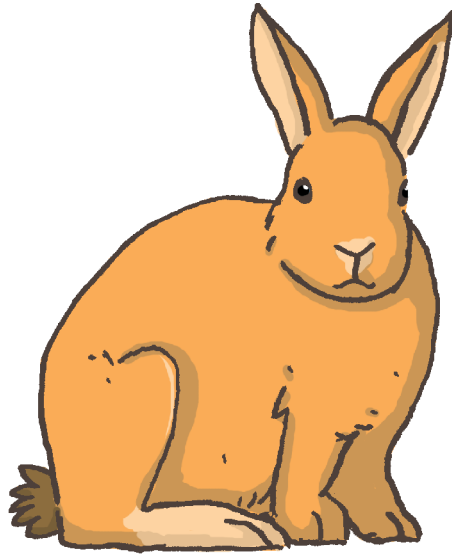
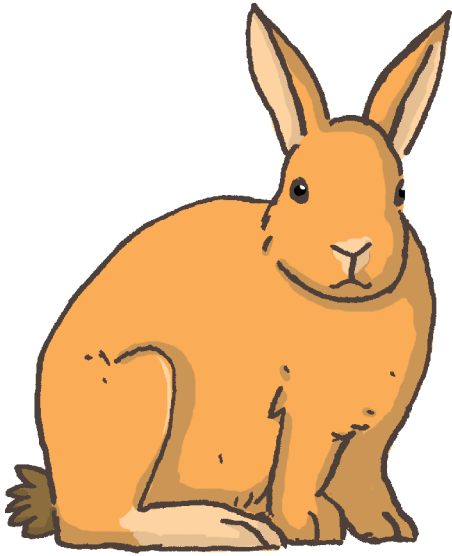
Il reprend les mots du jeu à verbaliser.





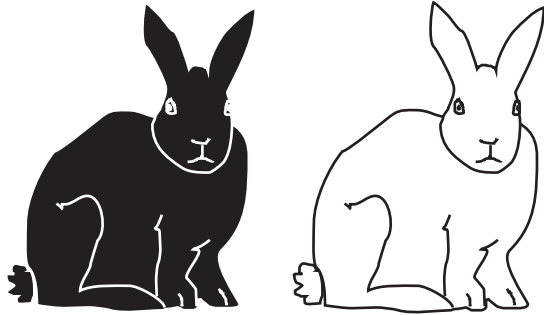






► **Fiches parents. Le memory des grandeurs : lexique (1ère maternelle)**

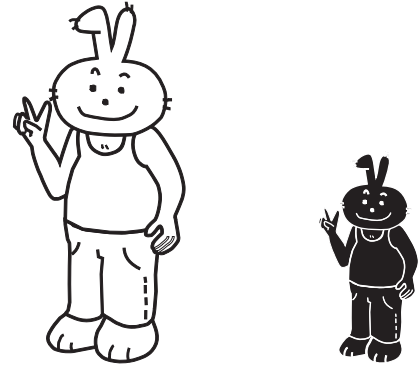
De quelle couleur sont les lapins ?



Noir

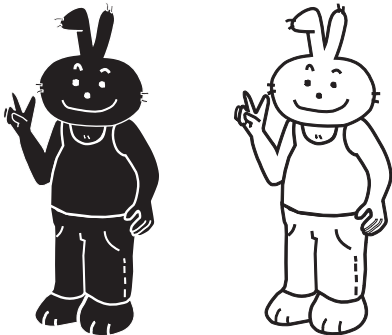
Blanc

Comment est le lapin blanc par rapport au lapin noir ?



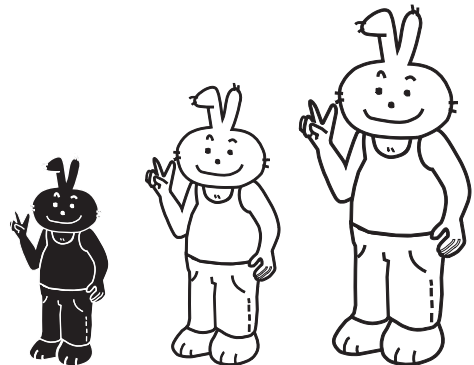
Grand

Comment sont les deux lapins ?



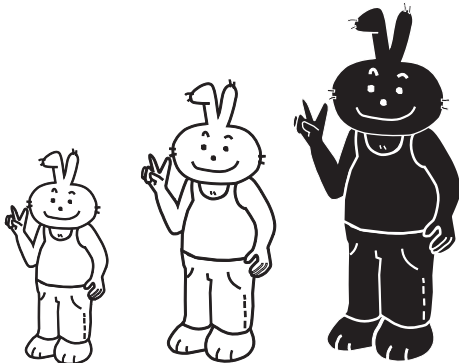
De la même grandeur

Que vas-tu dire du lapin en noir ?



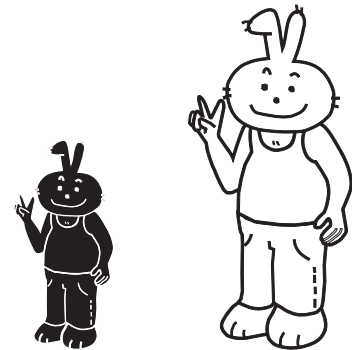
C'est le plus petit

Que vas-tu dire du lapin en noir ?



C'est le plus grand

Comment est le lapin en noir par rapport au lapin en blanc ?



Petit