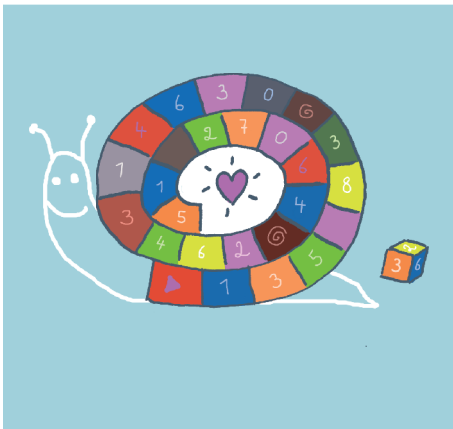
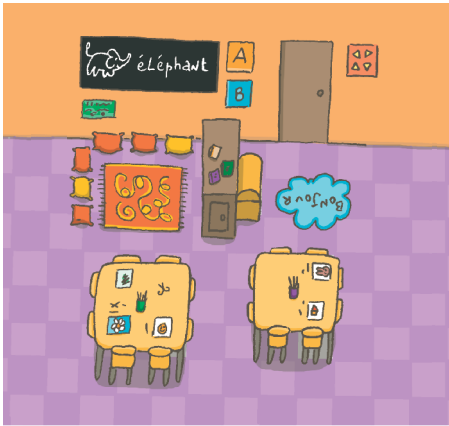
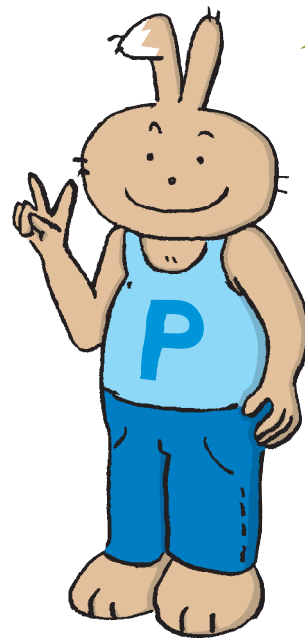


Activité : Le dessin à reconnaître, l'école



“ Voici des images,
dis ce que c'est “



J'ai beaucoup aimé faire cette activité !



J'ai aimé faire cette activité !



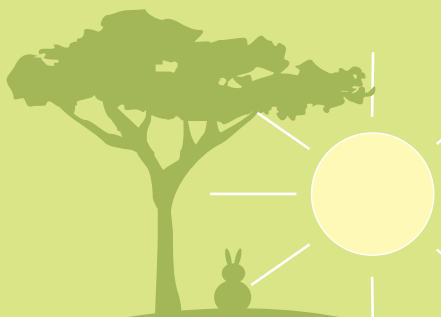
J'ai moyennement aimé faire cette activité !



Je n'ai pas aimé faire cette activité !

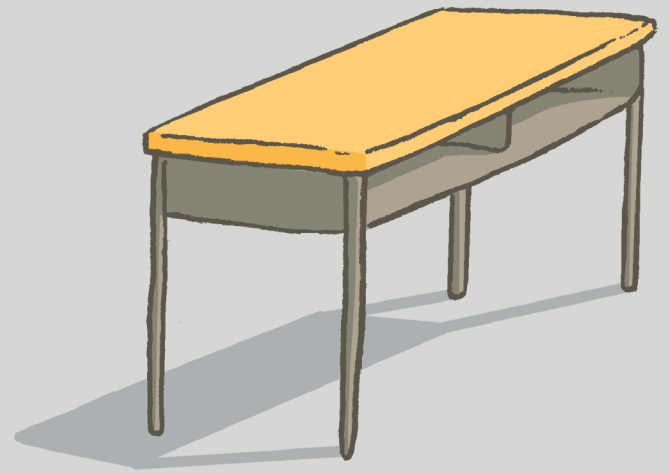


Coche le lapin
correspondant





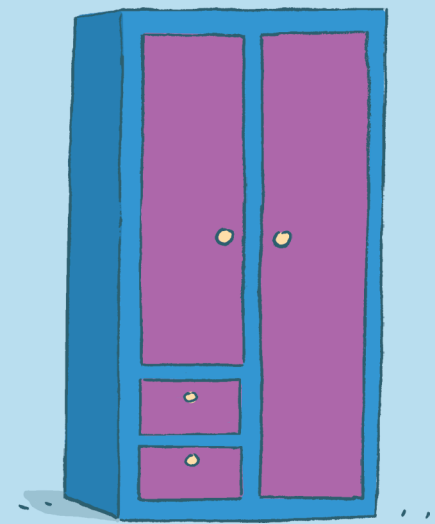
la classe



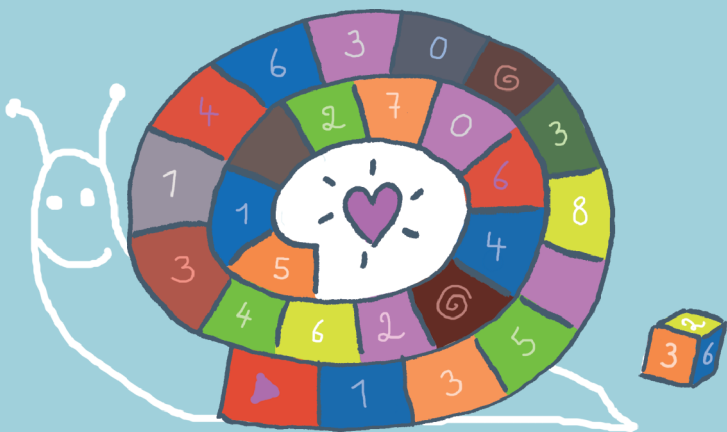
un banc



la chaise



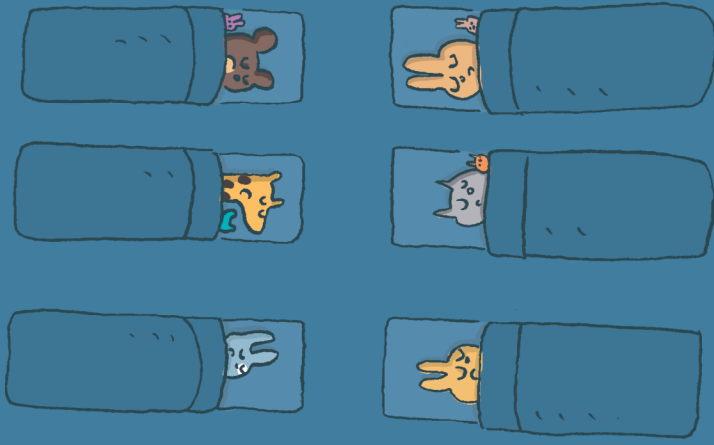
une armoire



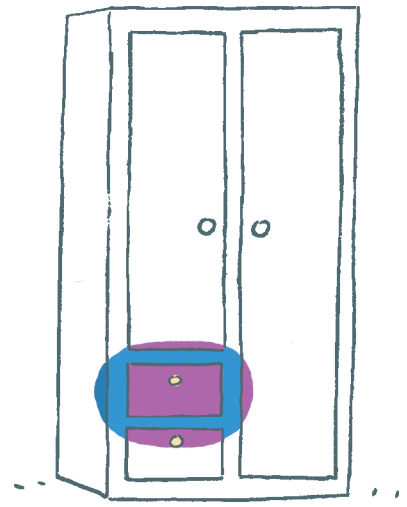
le jeu



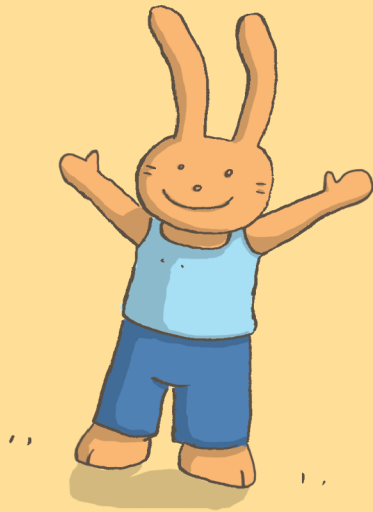
le papier



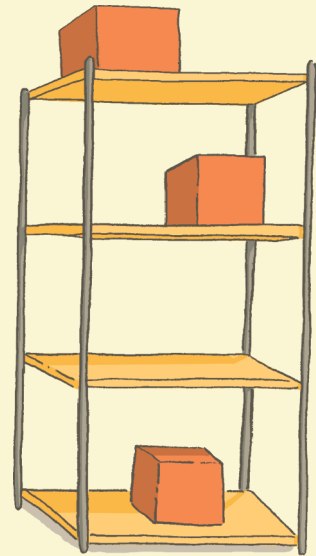
la sieste



un tiroir



une peluche



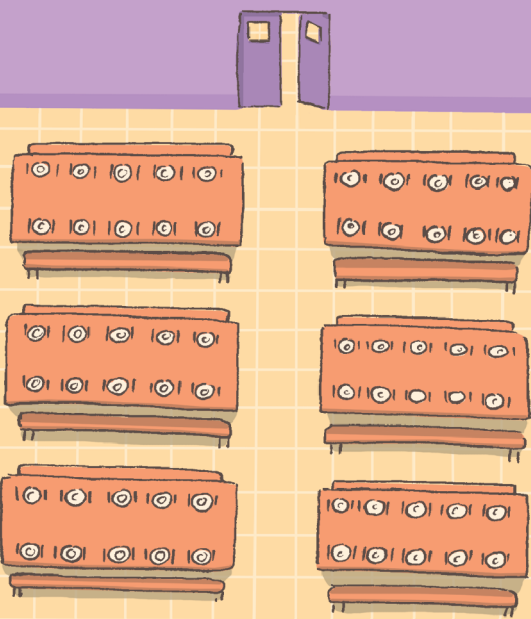
une étagère



un tabouret



la poubelle



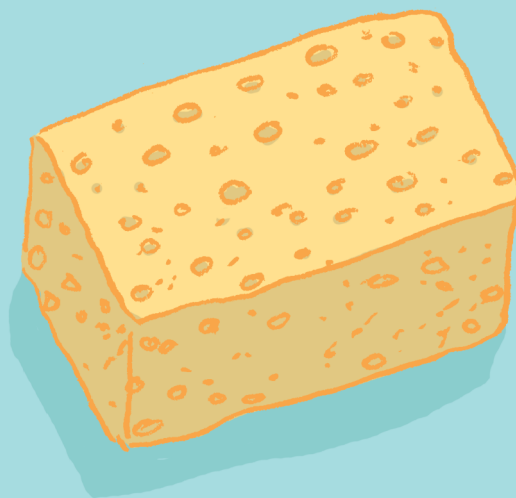
la cantine



la bibliothèque



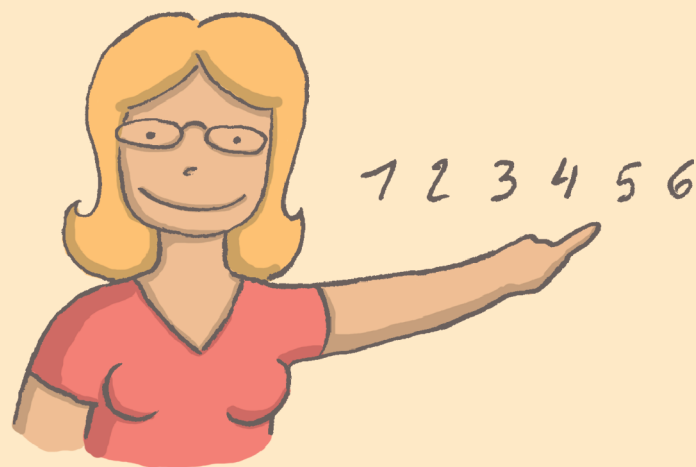
le calendrier



l'éponge



la récréation



l'instituteur(trice)